

Project Status Summary

- **CCOS Data Schedule**
- **Project Schedule**
- **Addition of July 1999 Episode**
- **CARB Proposed Sub-Domains for Performance Evaluation**

CCOS Data Delivery Schedule

Types of Data	Delivery date with Level 0 QA/QC *	Delivery date with Level 1 QA/QC **
July 30-August 2, 2000 Episode		
Surface Winds	Delivered	2/28/2003
Surface Temperatures	Delivered	3/14/2003
Surface Humidity	Delivered	N/A
Upper Air Winds	Delivered	Delivered
Upper Air Temperatures	Delivered	Delivered
Upper Air Humidity	Delivered	N/A
Surface Ozone	2/21/2003	2/28/2003
Surface NOx	2/21/2003	3/14/2003
Surface VOC	2/21/2003	3/28/2003
Aircraft Ozone	2/21/2003	3/28/2003
Aircraft NOx	2/21/2003	3/28/2003
Aircraft VOC	2/21/2003	3/28/2003

CCOS Data Delivery Schedule

Types of Data	Delivery date with Level 0 QA/QC *	Delivery date with Level 1 QA/QC **
June 14-15, 2000 Episode		
Surface Winds	2/21/2003	N/A
Surface Temperatures	2/21/2003	N/A
Surface Humidity	2/21/2003	N/A
Upper Air Winds	2/21/2003	4/18/2003
Upper Air Temperatures	2/21/2003	4/18/2003
Upper Air Humidity	2/21/2003	N/A
Surface Ozone	2/21/2003	N/A
Surface NOx	2/21/2003	N/A
Surface VOC	2/21/2003	N/A
Aircraft Ozone	N/A	N/A
Aircraft NOx	N/A	N/A
Aircraft VOC	N/A	N/A

QA/QC definitions:

Level 0: Data as obtained from the CCOS contractors.

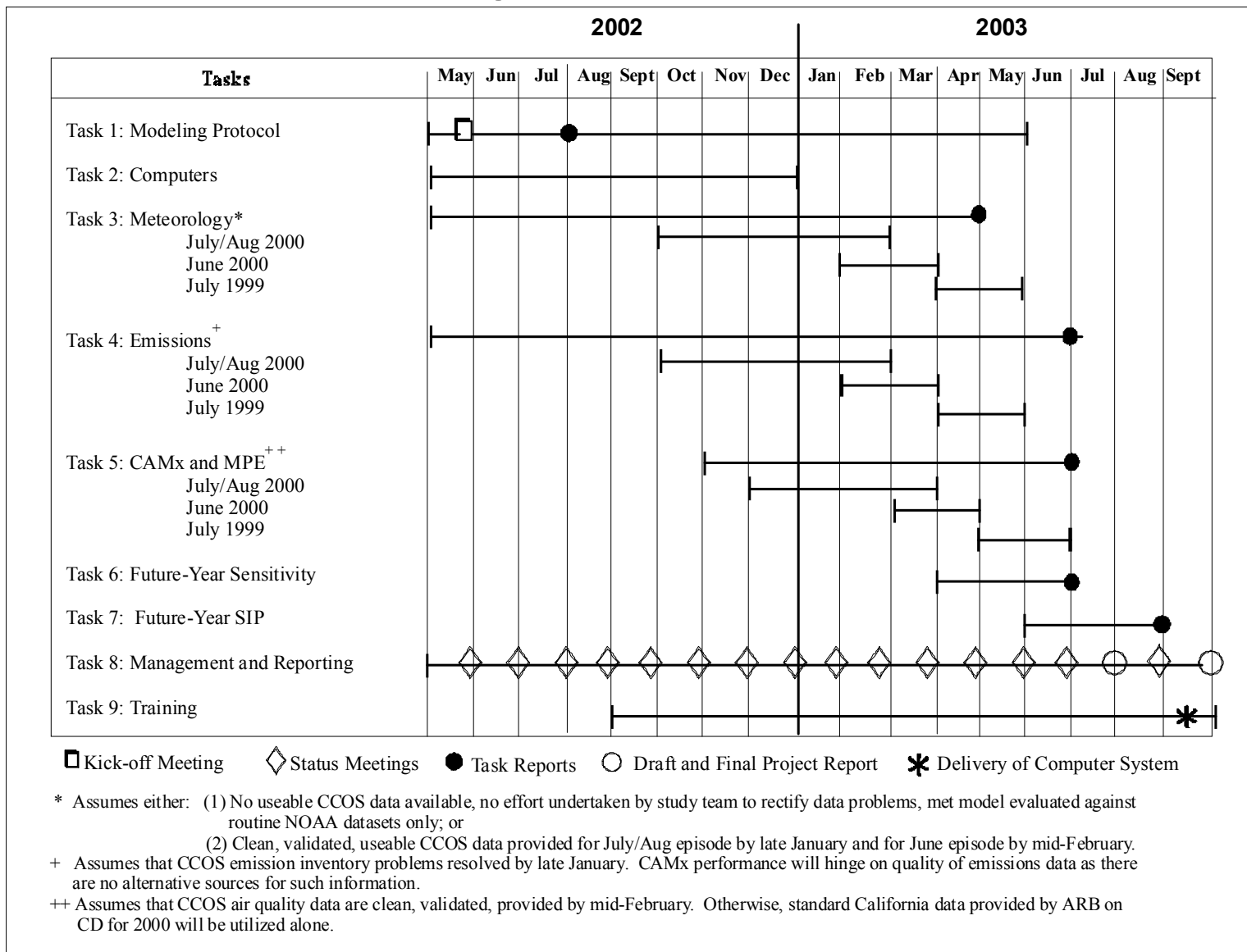
Level 1: Major outliers eliminated in the database.

* Includes both CCOS specific data as well as routinely collected data

** Includes CCOS data only

N/A means no CCOS specific data are available.

Project Schedule



Addition of July 1999 Episode

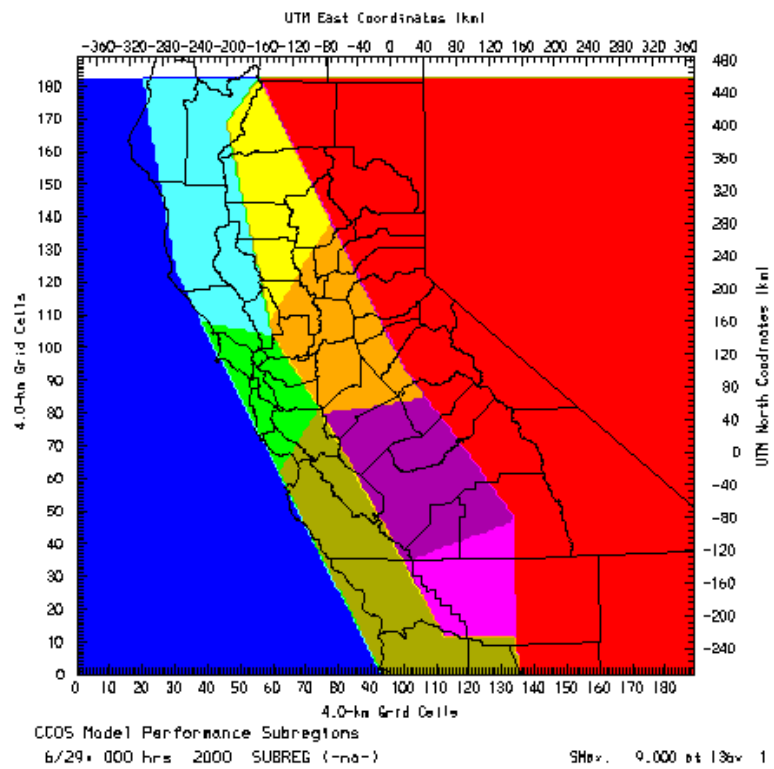
- **Conference call Feb 19**
- **BAAQMD, CARB, SMAQMD, SJVAQMD, CAP, DRI, AG**
- **Observational Database**
 - CARB Compiling for July 1-15
 - RAOBS, APOBS, RASS, Surface Met, AQ
 - Needs QA/QC and consistent format
 - Checks on representativeness

Addition of July 1999 Episode

- Need to better define CA-wide episode period
- Districts to review their data submittals for AQ
- CARB to provide as-is for now
 - Build database and format as QA/QC proceeds
 - ARB to assign a database manager
- **Emissions**
 - AG has point, area, and biogenics
 - Needs to develop on-road mobile emissions

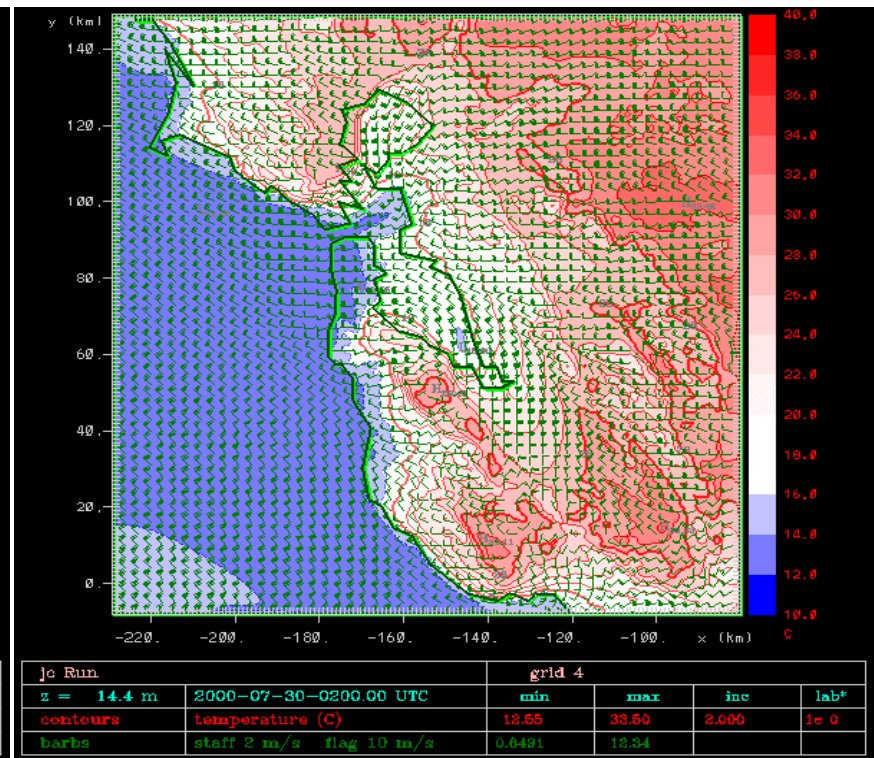
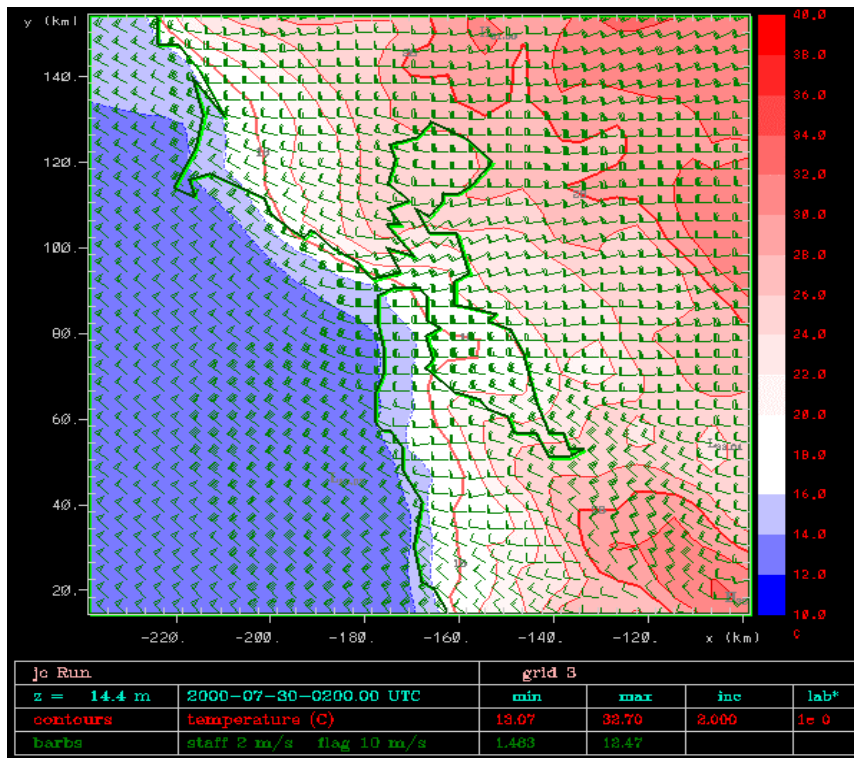
Addition of July 1999 Episode

- CARB is looking at CCOS inventory at sub-basin level
 - CARB and AG working together to review entire inventory
- Need to compare 1999 vs. 2000 emission summaries
 - Districts to review data/county-level summaries
 - Include review current CCOS inventories
 - CARB to coordinate a forum to review inventories with Districts

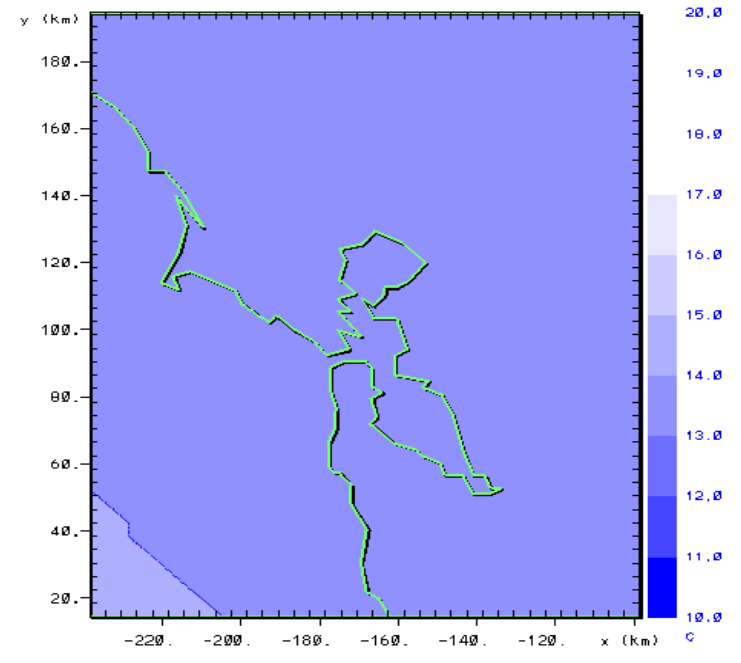
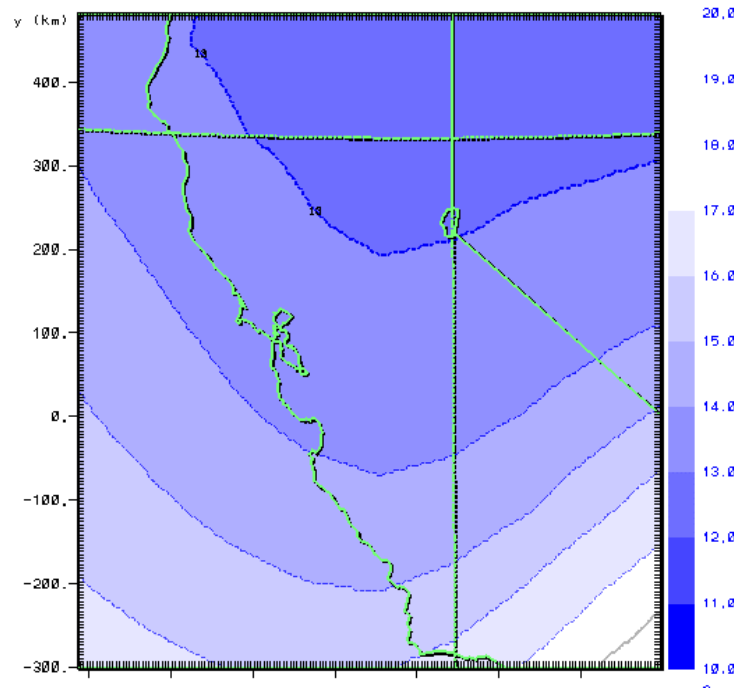


name	first level	soil	#grids	duration	nudge	SF Bay temps	Comments
b2	24m	Dry, but irrigated wet	3	072800-080212	no	no	
b1	24m	Wet	3	072800-080212	no	no	
c1	14m	Dry, but irrigated wet	3	072800-080212	no	no	
c1-nudge	14m	Dry, but irrigated wet	3	072800-080212	yes 10800s	no	Turned on anal nudging
g4	14m	Dry, but irrigated wet	4	072900-073012	no	no	Added g4
g4sst	14m	Dry, but irrigated wet	4	072900-073012	no	yes	SF Bay water temps added
g4sst_veg	14m	Dry, SF bay area wet	4	072900-073012	no	yes	Irrigated areas made dry, areas around SF made wet
g4sst_dry	14m	Dry	4	072900-073012	no	yes	Dry soil all over
g4big	14m	Dry	4	072900-073012	no	yes	G4 170*210, extended south and east
g4sst-dry-long	14m	Dry	4	072800-080212	no	yes	
c3	14m	Dry	3	072800-080212	yes 7200s	no	stronger nudging
n3	14m	Medium	3	072800-080212	yes 7200s	no	stronger nudging and moister soil
w3	14m	Medium	3	072800-080212	yes 14400s	19C	weaker nudging, moister soil, modified Bay temps

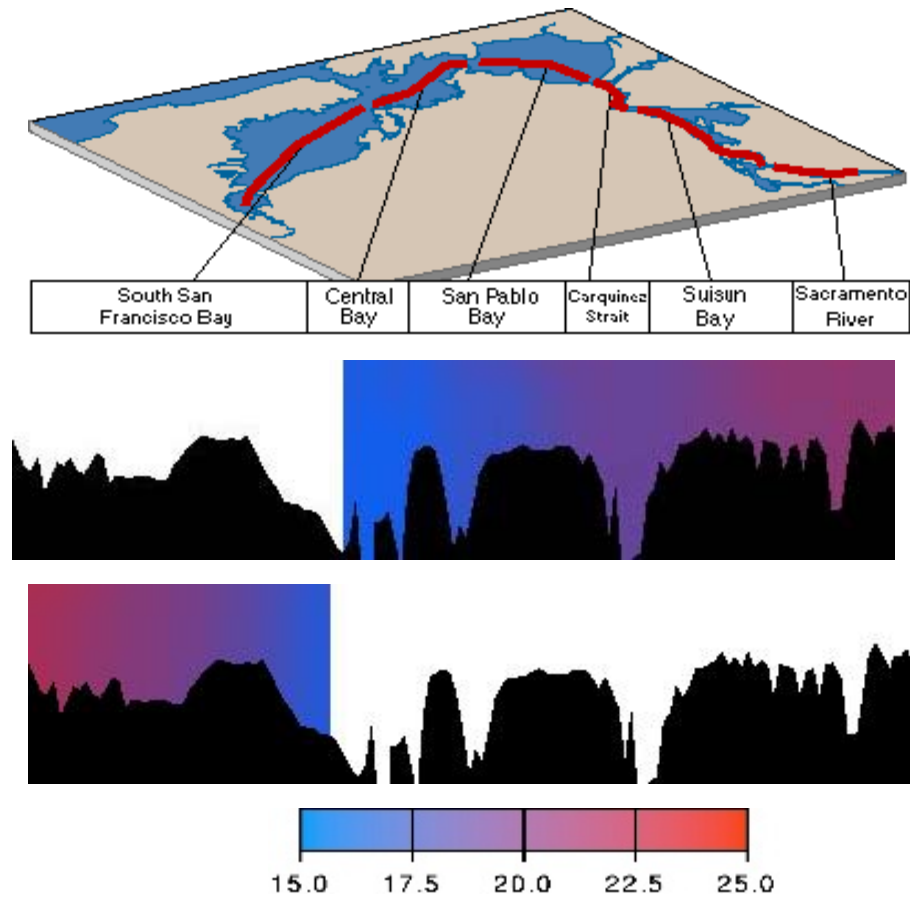
RAMS Modeling



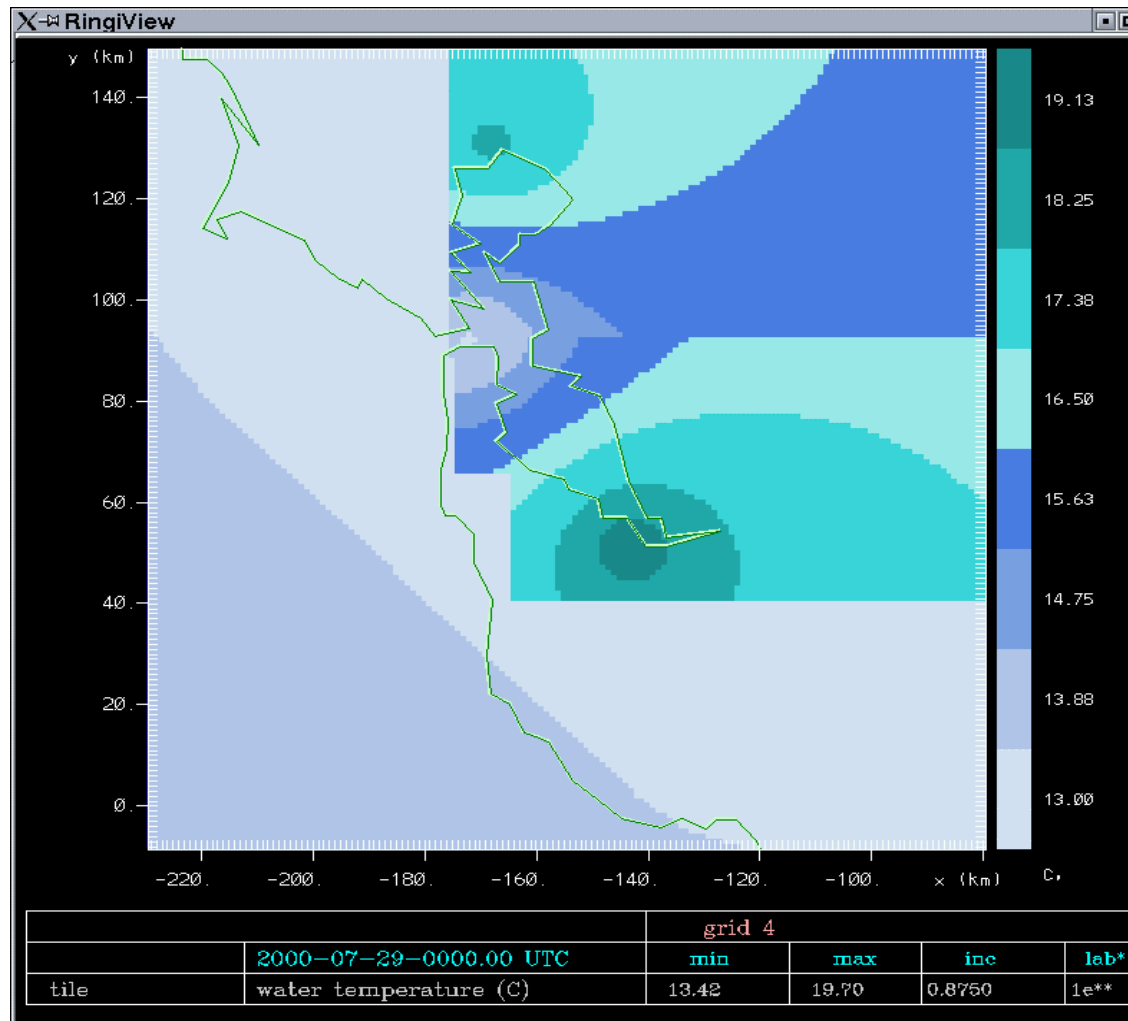
RAMS Modeling



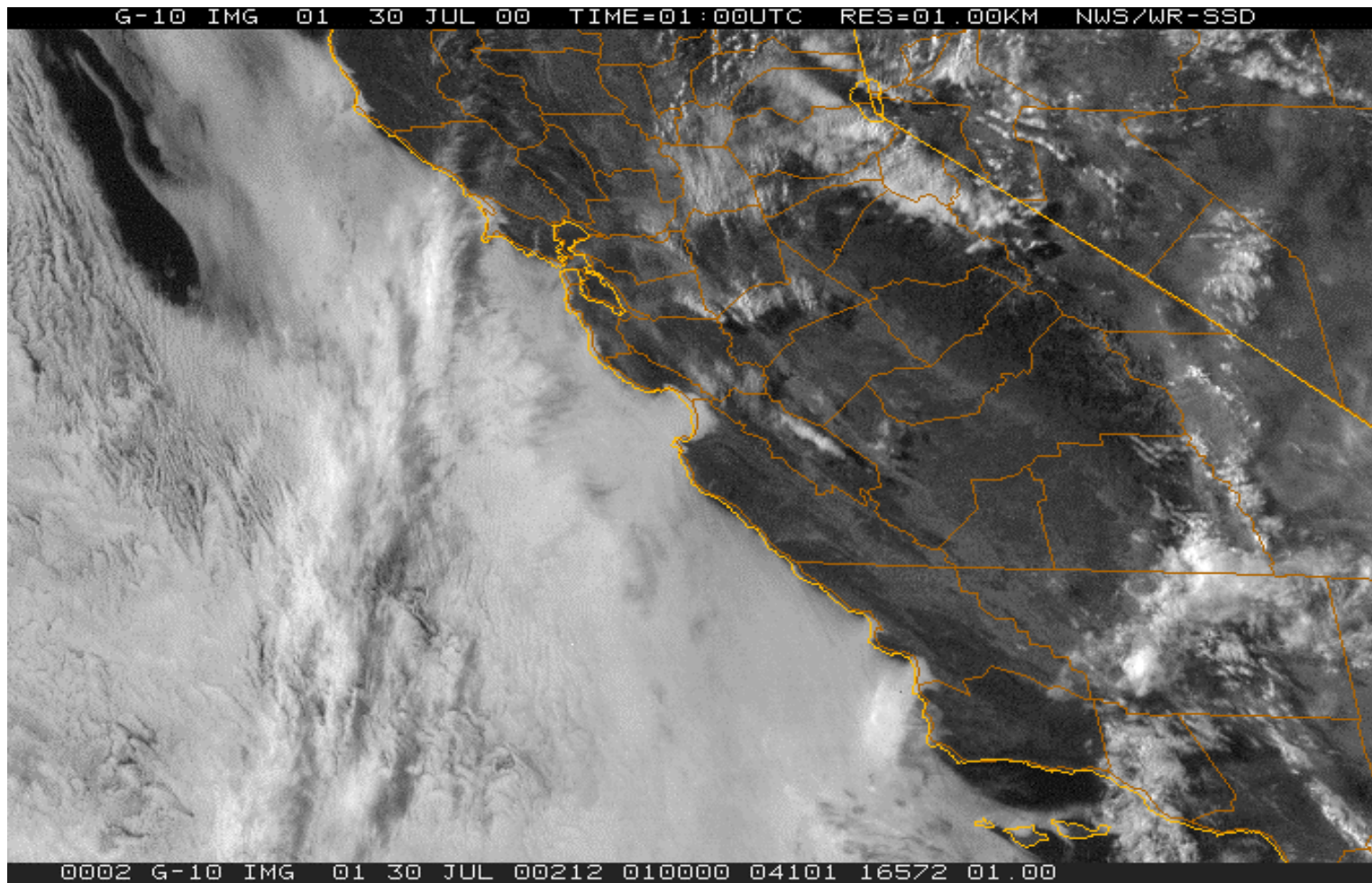
RAMS Modeling



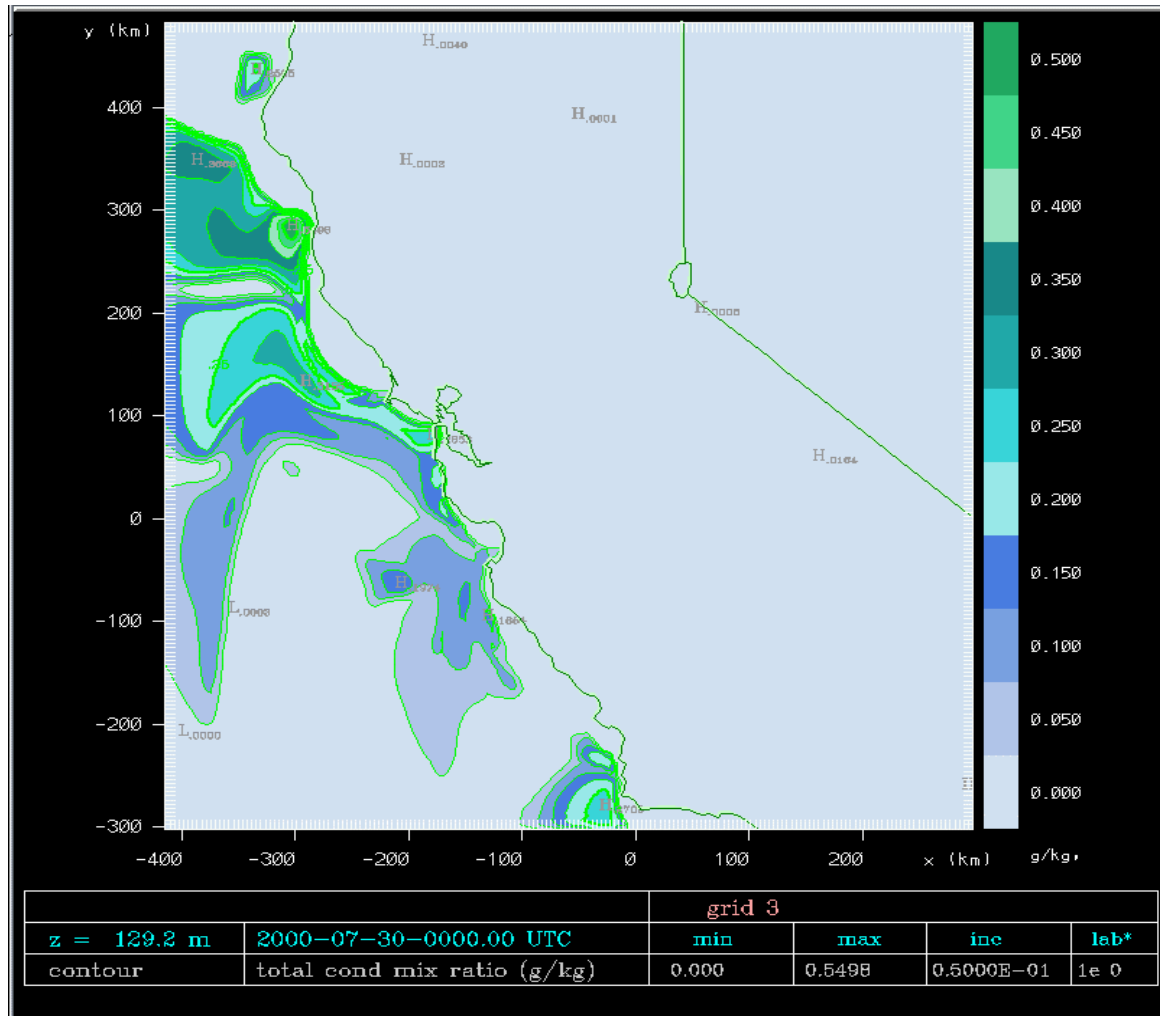
RAMS Modeling



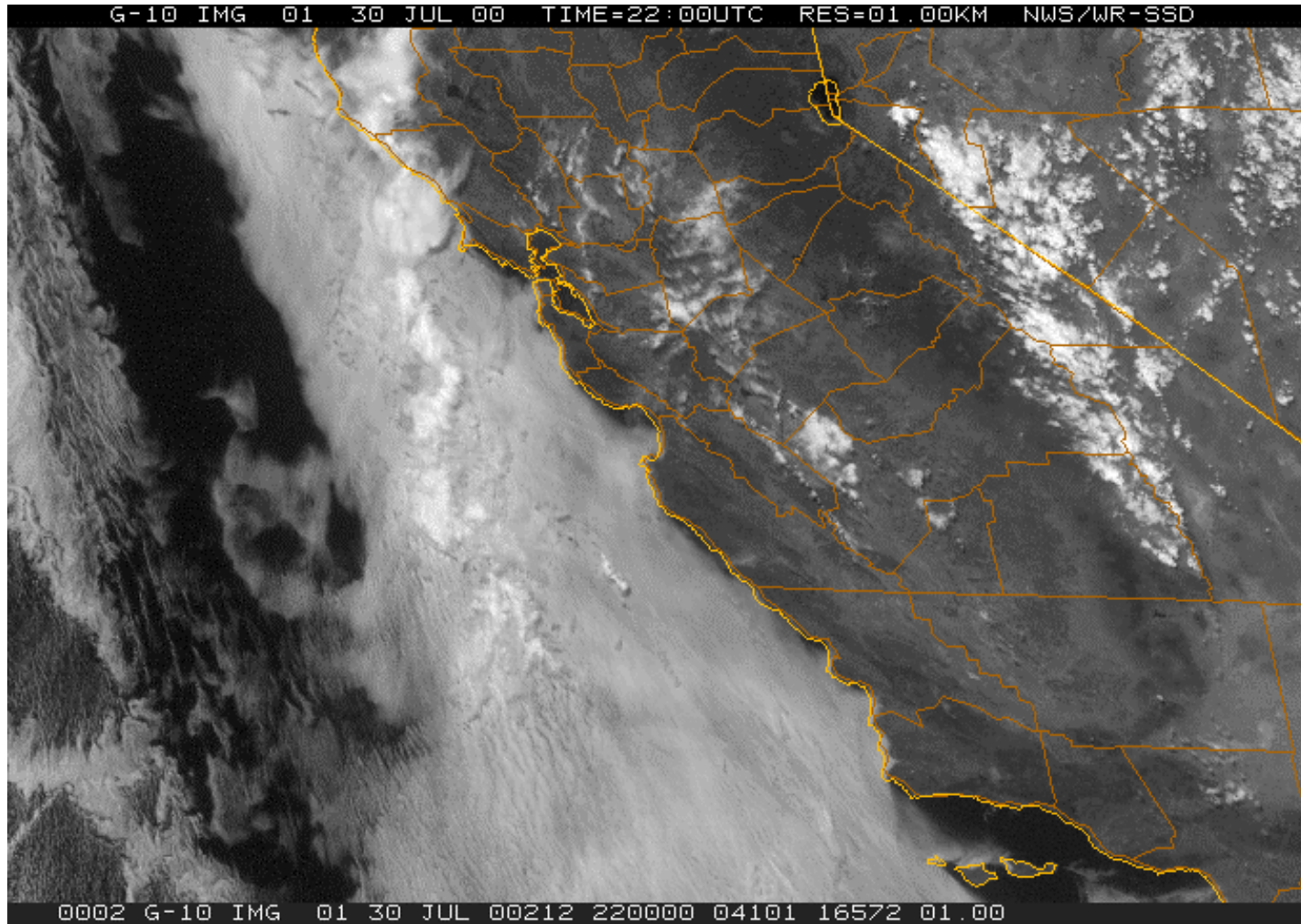
RAMS Modeling



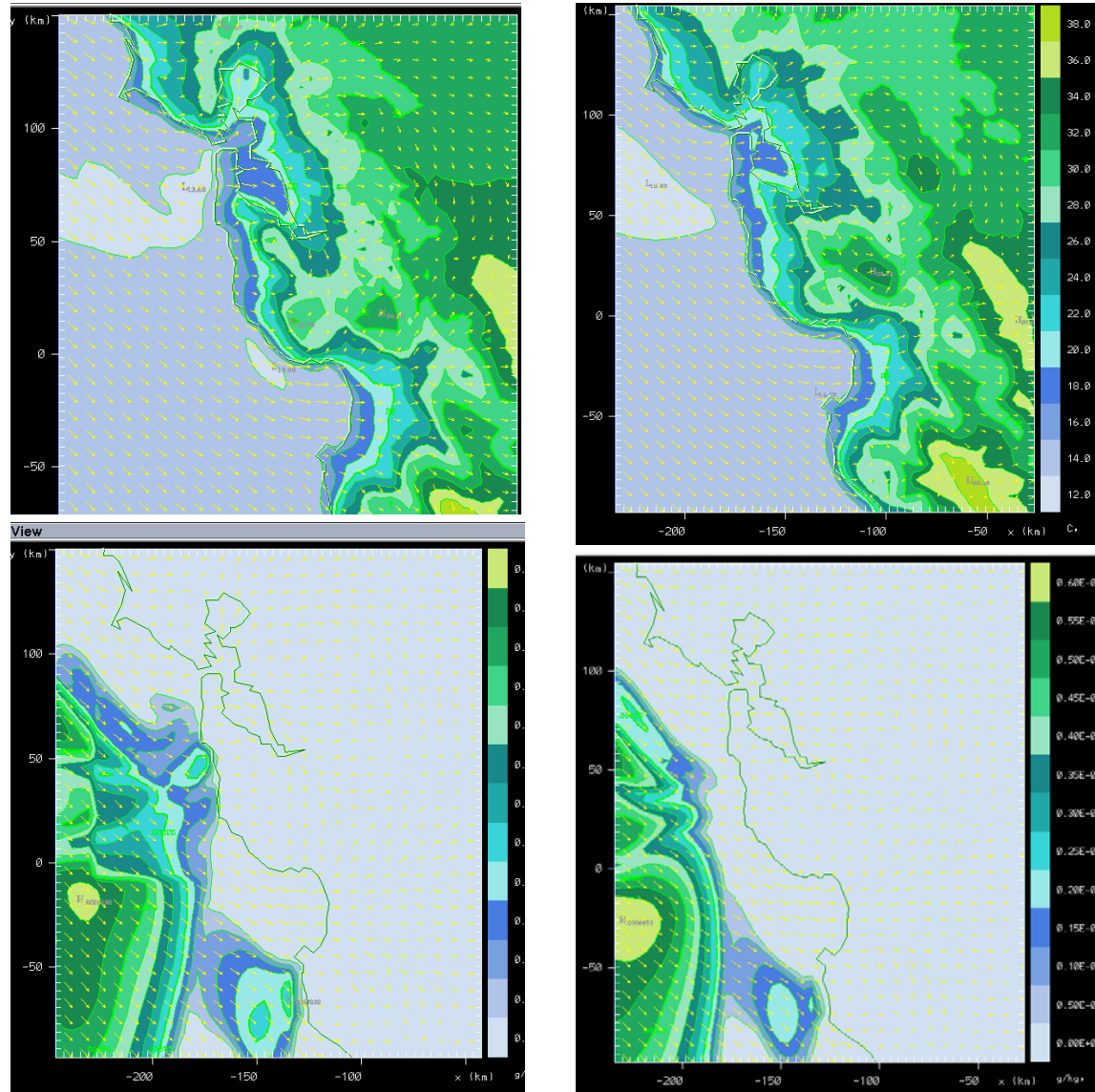
RAMS Modeling



RAMS Modeling

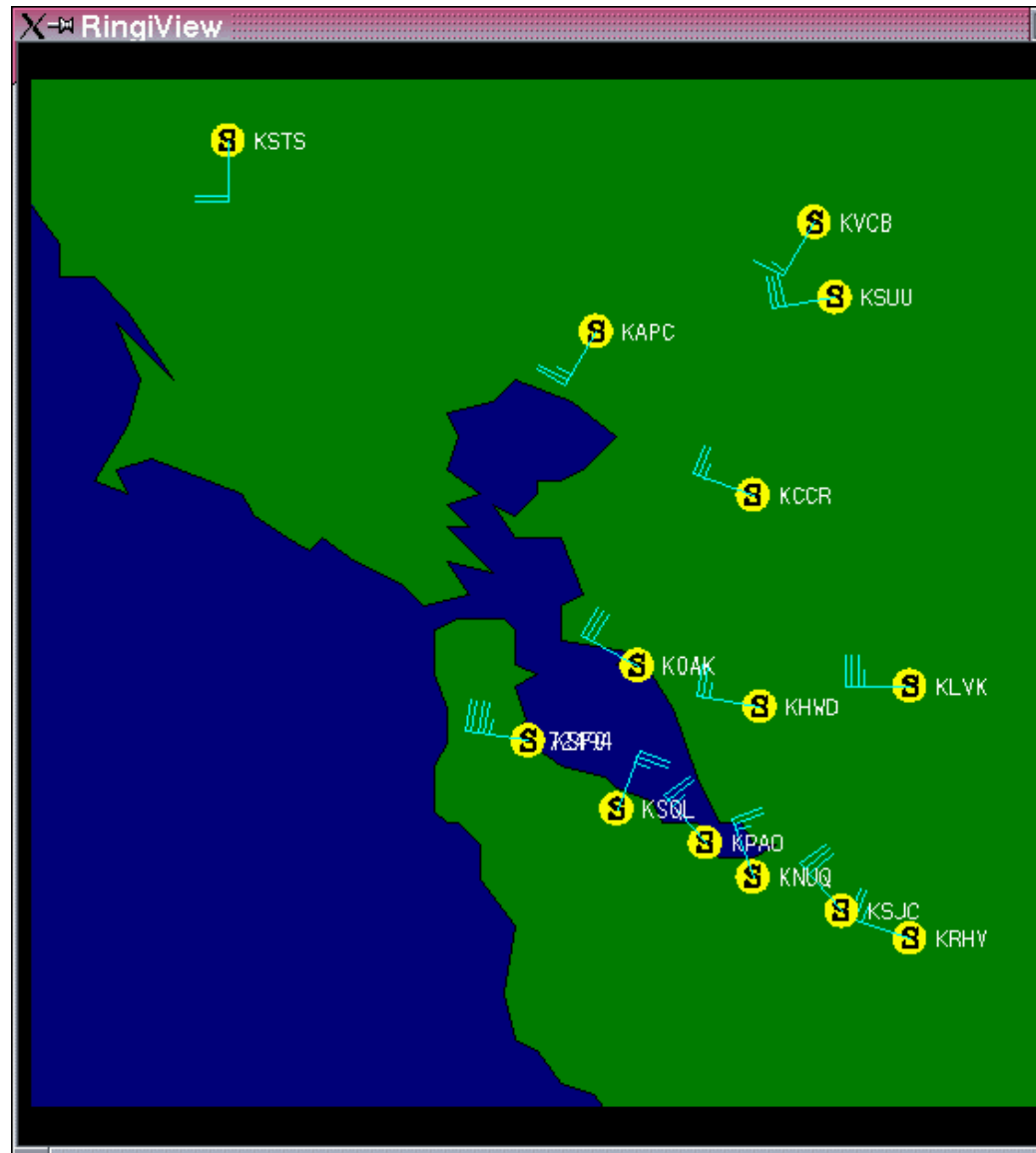


RAMS Modeling

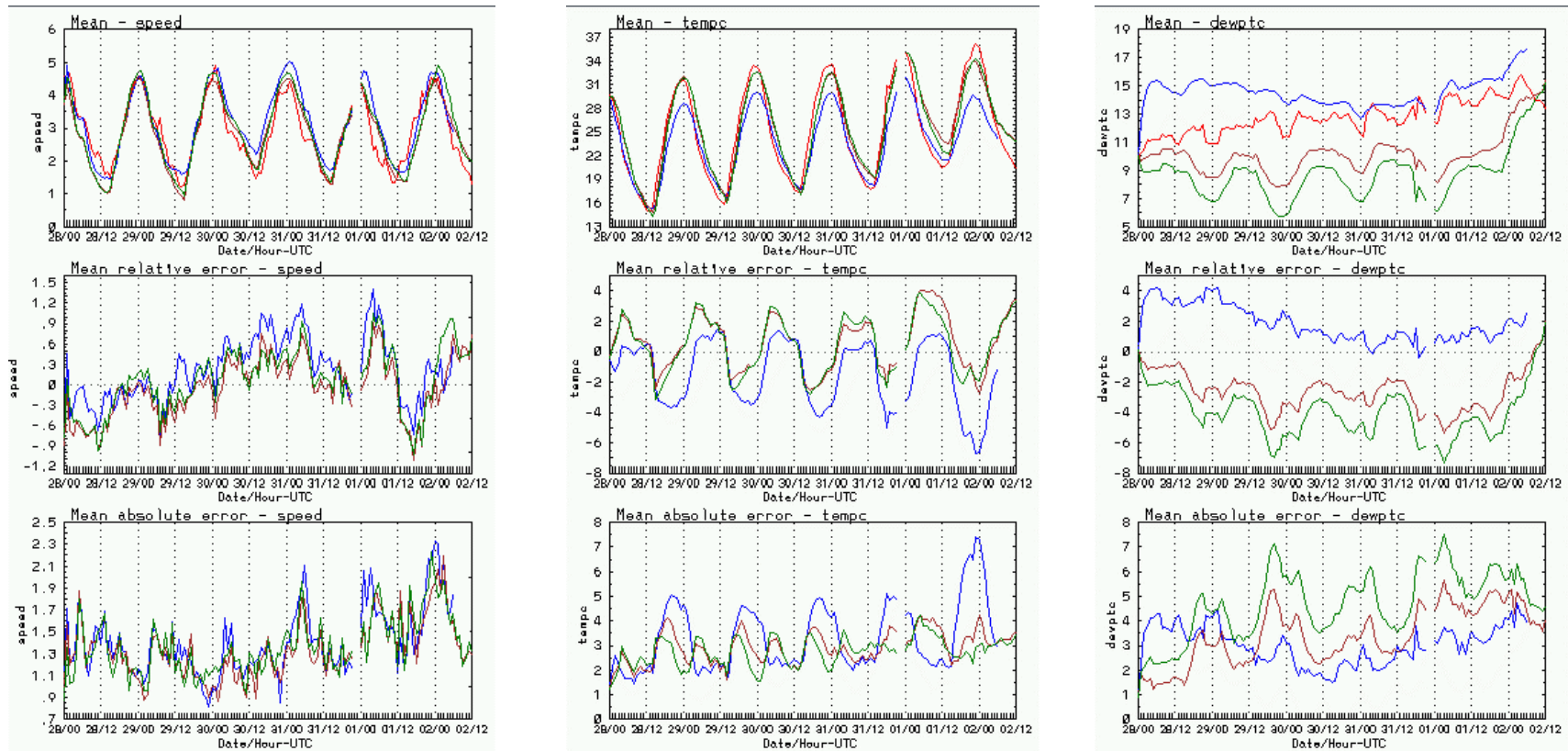


F

RAMS Modeling



RAMS Modeling

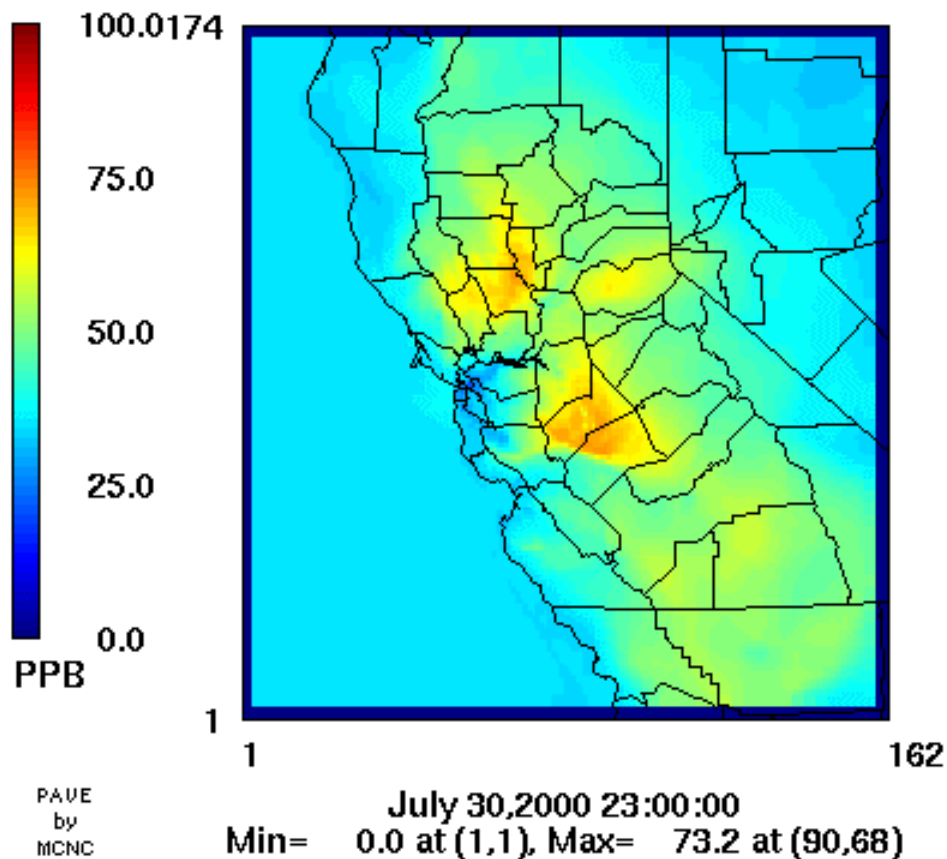


CAMx Modeling – Run 1c

- **First RAMS submission (early December)**
- **Revised emissions**
 - Area, fire (1/17/03)
 - Point (1/24/03), with fixed point locations
 - Other emissions as of December draft
- **Constant ozone BC: 40 ppb**
- **CB-IV using IEH solver**
- **No PiG**

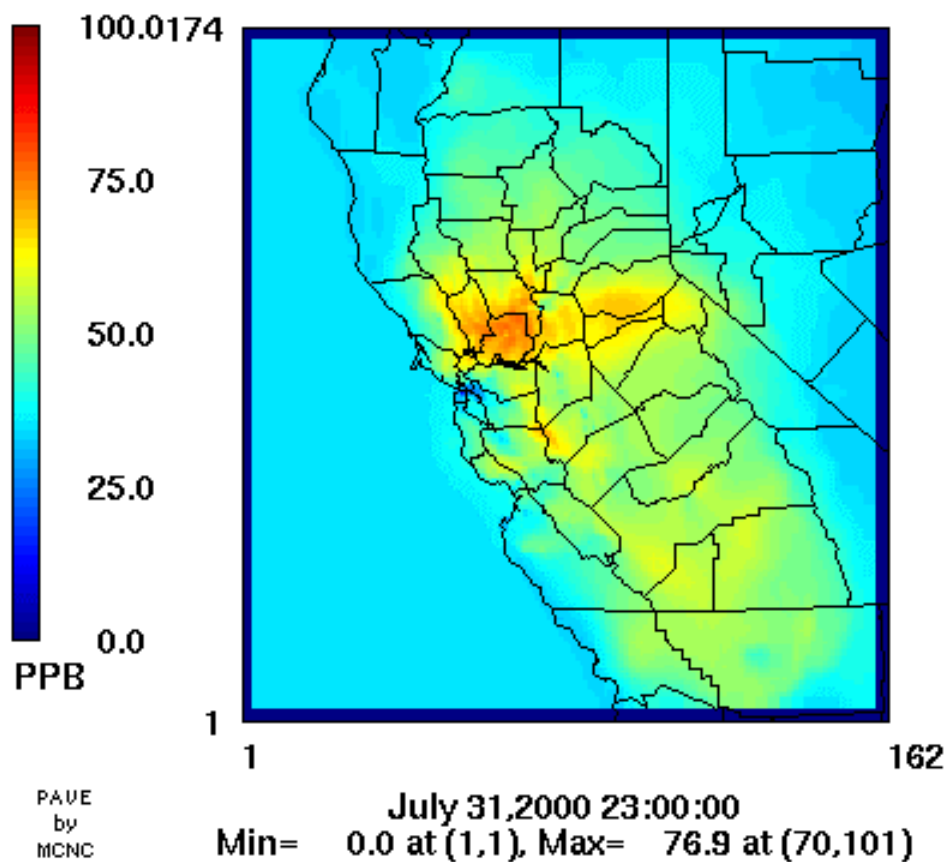
Daily Maximum Ozone

CAMx v3.10 Run 1c.
July 30, 2000



Daily Maximum Ozone

CAMx v3.10 Run 1c.
July 31, 2000



Daily Maximum Ozone

CAMx v3.10 Run 1c.
August 1, 2000

